

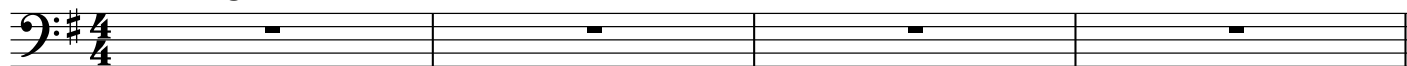
Should I Stay Or Should I Go

Written by:
The ClashAs played by **The Clash** on the album *Combat Rock* (1982)

Bass guitar: Paul Simonon

Punk Rock ♩=113**Intro**

guitars

*(with overdrive)***Verse**

D G (+ drums) D D G D

fingering: 4 2 1 2 4

G F G D G D

A A⁷ D G D

Detailed description: The verse consists of nine measures of music. The first three measures are grouped together. The first measure has a D chord and a bass line starting with a quarter rest, followed by eighth notes G, A, B, and C. The second measure has a G chord and a bass line starting with a quarter rest, followed by eighth notes B, A, G, and F. The third measure has a D chord and a bass line starting with a quarter rest, followed by eighth notes E, D, C, and B. The fourth measure has a D chord and a bass line starting with a quarter rest, followed by eighth notes G, A, B, and C. The fifth measure has a G chord and a bass line starting with a quarter rest, followed by eighth notes B, A, G, and F. The sixth measure has a D chord and a bass line starting with a quarter rest, followed by eighth notes E, D, C, and B. The seventh measure has an A chord and a bass line starting with a quarter rest, followed by eighth notes G, A, B, and C. The eighth measure has an A7 chord and a bass line starting with a quarter rest, followed by eighth notes B, A, G, and F. The ninth measure has a D chord and a bass line starting with a quarter rest, followed by eighth notes G, A, B, and C. The piece ends with a double bar line.

Chorus

D G D G

5 5 5-5 4-5 6-7 | 5 5 5-5 7-5 7-4 | 5 5 5-5 4-5 6-7

D G F G

5 5 5-5 7-5 7-4 | 5 5 5 5 5 3 3 3 3 3 | 5 5 5 5 5 3 5 3

> > > > > >

D G D

5 5 5 5 4-5 6-7 | 5 5 5 5 7-5 7-5

> > >

A A7 D

7-7-7 7-7-7-7-7-7-7 | 7-7-7 5-5-5-0 | 5

> >